

Measure Information Form
Collected For: The Joint Commission Only
CMS Informational Only

Measure Set: Tobacco Treatment (TOB)

Set Measure ID #: TOB-4

Performance Measure Name: Tobacco Use: Assessing Status after Discharge

Description: Discharged patients who are identified through the screening process as having used tobacco products (cigarettes, smokeless tobacco, pipe, and cigars) within the past 30 days who are contacted within 30 days after hospital discharge and follow-up information regarding tobacco use status is collected.

Rationale: Tobacco use is the single greatest cause of disease in the United States today and accounts for more than 435,000 deaths each year. (CDC, MMWR 2008; McGinnis 1993). Smoking is a known cause of multiple cancers, heart disease, stroke, complications of pregnancy, chronic obstructive pulmonary disease, other respiratory problems, poorer wound healing, and many other diseases (DHHS 2004). Tobacco use creates a heavy cost to society as well as to individuals. Smoking-attributable health care expenditures are estimated at 96 billion dollars per year in direct medical expenses and 97 billion dollars in lost productivity (CDC 2007).

There is strong and consistent evidence that tobacco dependence interventions, if delivered in a timely and effective manner, significantly reduce the smoker's risk of suffering from tobacco-related disease and improved outcomes for those already suffering from a tobacco-related disease (DHHS 2000; Baumeister 2007; Lightwood 2003 and 1997; Rasmussen 2005; Hurley 2005; Critchley 2004; Ford 2007; Rigotti 2008). Effective, evidence-based tobacco dependence interventions have been clearly identified and include brief clinician advice, individual, group, or telephone counseling, and use of the FDA-approved cessation medications. These treatments are clinically effective and extremely cost-effective relative to other commonly used disease prevention interventions and medical treatments. Hospitalization (both because hospitals are a tobacco-free environment and because patients may be more motivated to quit as a result of their illness) can be an ideal opportunity to provide cessation assistance that may promote the patient's medical recovery. Patients who receive even brief advice and intervention from their care providers are more likely to quit than those who receive no intervention. Tobacco dependence should be viewed as a chronic disease. The treatment of this chronic disease is most effective when the initial interventions provided in the hospital setting are continued upon discharge in other care settings (Rigotti 2008).

Type of Measure: Outcome

Improvement Noted As: Increase in the rate

Numerator Statement: The number of discharged patients who are contacted within 30 days after hospital discharge and follow-up information regarding tobacco use status is collected.

Included Populations: Not Applicable

Excluded Populations: None

Data Elements:

- *Follow-up Contact*
- *Follow-up Contact Date*
- *Tobacco Use Status Post-Discharge (Informational Only)*

Denominator Statement: The number of discharged patients 18 years of age and older identified as current tobacco users.

Included Populations: Not applicable

Excluded Populations:

- Patients less than 18 years of age
- Patient who are not current tobacco users
- Patients who expired
- Patients who have a duration of stay less than or equal to one day
- Patients with a length of stay greater than 120 days
- Patients discharged to another hospital
- Patients who left against medical advice
- Patients discharged to another health care facility
- Patients discharged to home or another health care facility for hospice care
- Patients who do not reside in the United States
- Patients who do not have a phone or cannot provide contact information
- Patients discharged to a detention facility, jail or prison

Data Elements:

- *Admission Date*
- *Birthdate*
- *Discharge Date*
- *Discharge Disposition*
- *Tobacco Use Status*

Risk Adjustment: No

Data Collection Approach: Retrospective data sources for required data elements include administrative data and medical records. Some hospitals may prefer to gather data concurrently by identifying patients in the population of interest. This approach provides opportunities for improvement at the point of care/service. However, complete documentation includes the principal and other ICD-9-CM diagnoses which require retrospective data entry.

The measures intent as described in the measures description and numerator statement is that information gathered during the follow-up contact regarding the patient's compliance with prescribed outpatient treatment and post discharge status relevant to substance use will be cataloged at the hospital. The informational data element for *Tobacco use Discharge Status Post Discharge* should be referenced and pertinent allowable values recorded on follow up log sheets or other documentation as determined appropriate by the hospital.

Data Accuracy: Data accuracy is enhanced when all definitions are used without modification. The data dictionary should be referenced for definitions and abstraction notes when questions arise during data collection.

Measure Analysis Suggestions: Hospitals may wish to analyze the measure data using the informational data element *Tobacco Use Status Post Discharge* to determine the difference in use status related to interventions made during the hospital stay or referrals at discharge.

Sampling: Yes, please refer to the measure set specific sampling requirements and for additional information see the Population and Sampling Specifications section.

Data Reported As: Aggregate rate generated from count data reported as a proportion

Selected References:

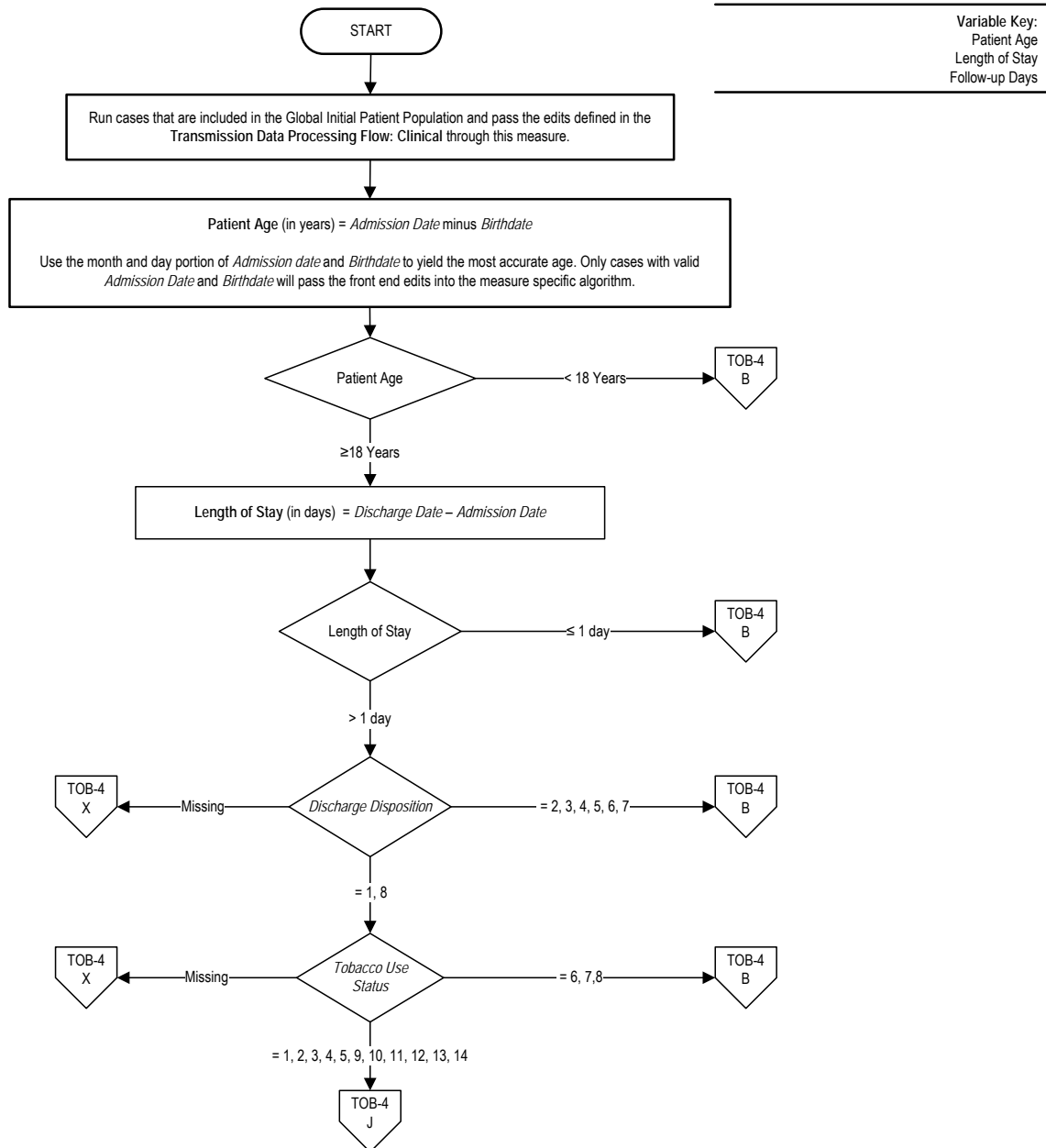
- Centers for Disease Control and Prevention. Annual Smoking-Attributable Mortality, Years of Potential Life Lost, and Productivity Losses—United States, 2000-2004. *Morbidity and Mortality Weekly Report (MMWR)* 2008. 57(45): 1226-1228. Available at: <http://www.cdc.gov/mmwr/preview/mmwrhtml/mm5745a3.htm>.
- McGinnis JM, Foege WH. Actual causes of death in the United States. *JAMA* 1993 Nov 10;270(18):2207-12.
- U.S. Department of Health and Human Services. The health consequences of smoking: a report of the Surgeon General. Atlanta, GA, U.S. Department of Health and Human Services, Centers for Disease Control and Prevention, National Center for Chronic Disease Prevention and Health Promotion, Office on Smoking and Health, 2004.
- Centers for Disease Control and Prevention. Best Practices for Comprehensive Tobacco Control Programs—2007. Atlanta, GA, Department of Health and Human Services, Centers for Disease Control and Prevention, National Center

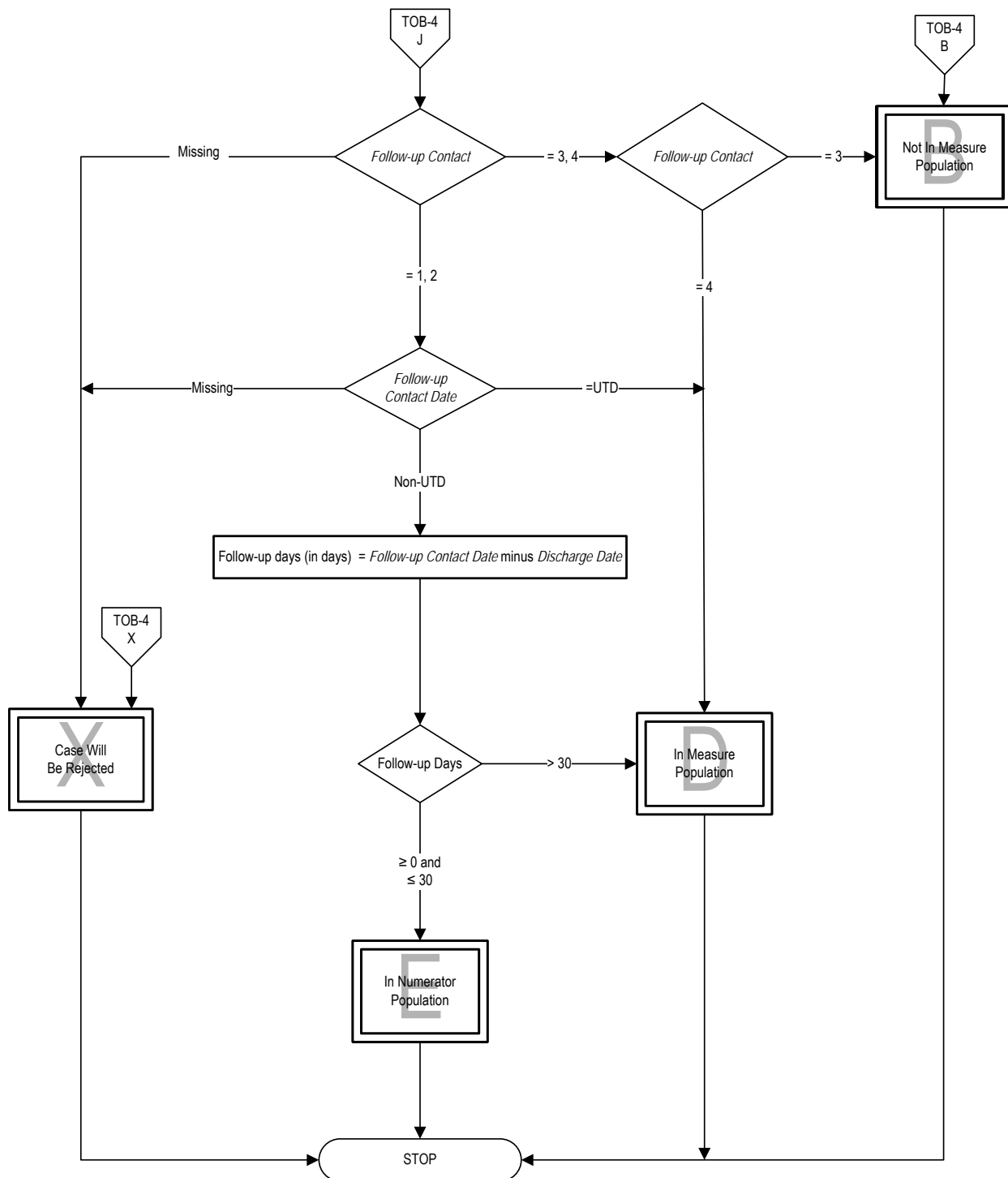
- for Chronic Disease Prevention and Health Promotion, Office on Smoking and Health, 2007.
- U.S. Department of Health and Human Services. Reducing tobacco use: a report of the Surgeon General. Atlanta, GA, U.S. Department of Health and Human Services, Centers for Disease Control and Prevention, National Center for Chronic Disease Prevention and Health Promotion, Office on Smoking and Health, 2000.
 - Baumeister SE, Schumann A, Meyer C, et al. Effects of smoking cessation on health care use: is elevated risk of hospitalization among former smokers attributable to smoking-related morbidity? *Drug Alcohol Depend.* 2007 May 11;88(2-3):197-203. Epub 2006 Nov 21.
 - Lightwood JM. The economics of smoking and cardiovascular disease. *Prog Cardiovasc Dis.* 2003 Jul-Aug;46(1):39-78.
 - Lightwood JM, Glantz SA. Short-term economic and health benefits of smoking cessation: myocardial infarction and stroke. *Circulation.* 1997 Aug 19;96(4):1089-96.
 - Rasmussen SR, Prescott E, Sorensen TI, et al. The total lifetime health cost savings of smoking cessation to society. *Eur J Public Health.* 2005 Dec;15(6):601-6. Epub 2005 Jul 13.
 - Hurley SF. Short-term impact of smoking cessation on myocardial infarction and stroke hospitalizations and costs in Australia. *Med J Aust.* 2005 Jul 4;183(1):13-7.
 - Critchley J, Capewell S. Smoking cessation for the secondary prevention of coronary heart disease. *Cochrane Database Syst Rev.* 2004;(1):CD003041.
 - Ford ES, Ajani UA, Croft JB, et al. Explaining the decrease in U.S. deaths from coronary disease, 1980-2000. *N Engl J Med.* 2007 Jun 7;356(23):2388-98.
 - Fiore MC et al. Treating Tobacco Use and Dependence: 2008 Update. Clinical Practice Guideline. Rockville, MD: U.S. Department of Health and Human Services. Public Health Service. May 2008.
 - U.S. Department of Health and Human Services: The health benefits of smoking cessation: a report of the Surgeon General. Publication No. (CDC) 90-8416. Rockville, MD: U.S. Department of Health and Human Services, 1990.
 - Rigotti NA, Munafò MR, Stead LF. Smoking cessation interventions for hospitalized smokers: a systematic review. *Arch Intern Med.* 2008 Oct 13;168(18):1950-60.

TOB-4: Tobacco Use: Assessing Status after Discharge

Numerator: The number of discharged patients who are contacted within 30 days after hospital discharge and follow-up information regarding tobacco use status is collected.

Denominator: The number of discharged patients 18 years of age and older identified as current tobacco users.





TOB-4: Tobacco Use: Assessing Status after Discharge

Numerator: The number of discharged patients who are contacted within 30 days after hospital discharge and follow-up information regarding tobacco use status is collected.

Denominator: The number of discharged patients 18 years of age and older identified as current tobacco users.

Variable key: Patient Age
Length of Stay
Follow-up Days

1. Start processing. Run cases that are included in the Global Initial Patient Population and pass the edits defined in the Transmission Data Processing Flow: Clinical through this measure.
2. Calculate Patient Age. Patient Age, in years, is equal to the Admission Date minus the Birthdate. Use the month and day portion of Admission Date and Birthdate to yield the most accurate age. Only cases with valid Admission Date and Birthdate will pass the front end edits into the measure specific algorithms.
3. Check Patient Age
 - a. If Patient Age is less than 18 years, the case will proceed to a Measure Category Assignment of B and will not be in the Measure Population. Stop processing.
 - b. If Patient Age is equal to or greater than 18 years, continue processing and proceed to calculate Length of Stay.
4. Calculate Length of Stay. Length of Stay, in days, is equal to the Discharge Date minus the Admission Date.
5. Check Length of Stay
 - a. If Length of Stay is equal to or less than 1 day, the case will proceed to a Measure Category Assignment of B and will not be in the Measure Population. Stop processing.
 - b. If Length of Stay is greater than 1 day, continue processing and proceed to check Discharge Disposition.

6. Check Discharge Disposition
 - a. If Discharge Disposition is missing, the case will proceed to a Measure Category Assignment of X and will be rejected. Stop processing.
 - b. If Discharge Disposition equals 2, 3, 4, 5, 6 or 7, the case will proceed to a Measure Category Assignment of B and will not be in the Measure Population. Stop processing.
 - c. If Discharge Disposition equals 1 or 8, continue processing and proceed to check Tobacco Use Status.

7. Check Tobacco Use Status
 - a. If Tobacco Use Status is missing, the case will proceed to a Measure Category Assignment of X and will be rejected. Stop processing.
 - b. If Tobacco Use Status equals 6, 7 or 8, the case will proceed to a Measure Category Assignment of B and will not be in the Measure Population. Stop processing.
 - c. If Tobacco Use Status equals 1, 2, 3, 4, 5, 9, 10, 11, 12, 13, or 14 continue processing and proceed to check Follow-up Contact.

8. Check Follow-up Contact
 - a. If Follow-up Contact is missing, the case will proceed to a Measure Category Assignment of X and will be rejected. Stop processing.
 - b. If Follow-up Contact equals 3 or 4, continue processing and proceed to recheck Follow-up Contact.
 - c. If Follow-up Contact equals 1 or 2, continue processing and proceed to check Follow-up Contact Date.

9. Recheck Follow-up Contact
 - a. If Follow-up Contact equals 3, the case will proceed to a Measure Category Assignment of B and will not be in the Measure Population. Stop processing.
 - b. If Follow-up Contact equals 4, the case will proceed to a Measure Category Assignment of D and will be in the Measure Population. Stop processing.

10. Check Follow-up Contact Date
 - a. If Follow-up Contact Date is missing, the case will proceed to a Measure Category Assignment of X and will be rejected. Stop processing.
 - b. If Follow-up Contact Date equals Unable to Determine, the case will proceed to a Measure Category Assignment of D and will be in the Measure Population. Stop processing.
 - c. If Follow-up Contact Date equals a Non Unable to Determine Value, continue processing and proceed to Follow-up Days Calculation.
11. Calculate Follow-up Days. Follow-up Days, in days, is equal to the Follow-up Contact Date minus the Discharge Date.
12. Check Follow-up Days
 - a. If Follow-up Days is greater than or equal to zero days and less than or equal to 30 days, the case will proceed to a Measure Category Assignment of E and will be in the Numerator Population. Stop processing.
 - b. If Follow-up Days is greater than 30 days, the case will proceed to a Measure Category Assignment of D and will be in the Measure Population. Stop processing.